

PRODUCTS OF **SWISS QUALITY**

www.prestigethermsolutions.co.uk



PrestigeTherm
— SOLUTIONS —

**Modern PScoat
insulation system
for construction,
healthcare and
industry**

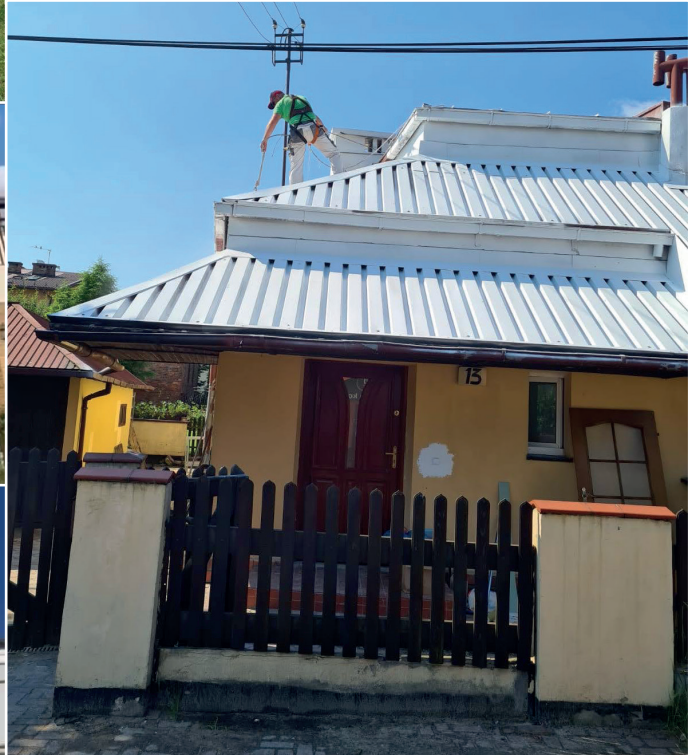


Cup of the Mayor of Biało Białe,
Poland for the best product
of the Trade Fair in 2020

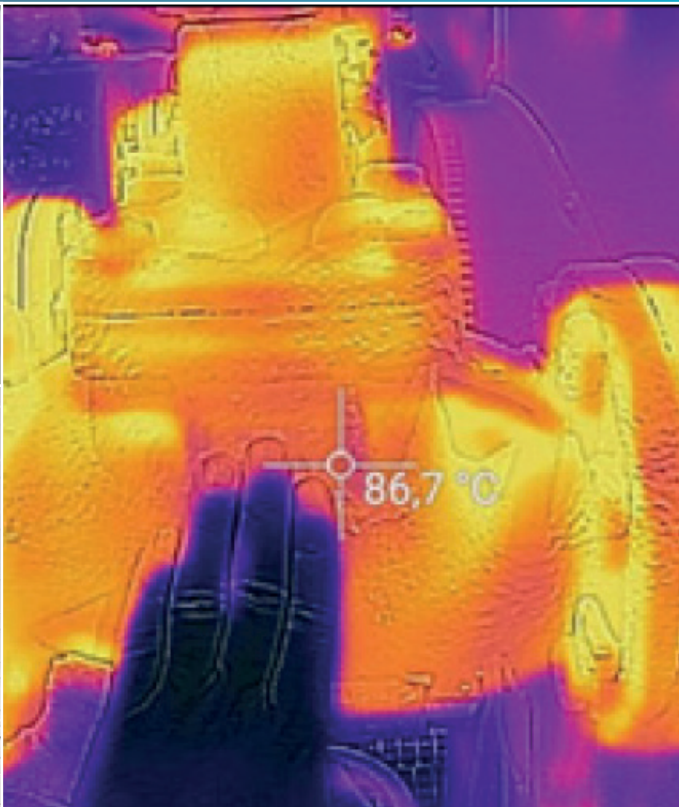


The Golden Building Pillar for the
best product in Poland in 2020

PScoat BUILDING



PScoat INDUSTRY



PScoat - how does it work?

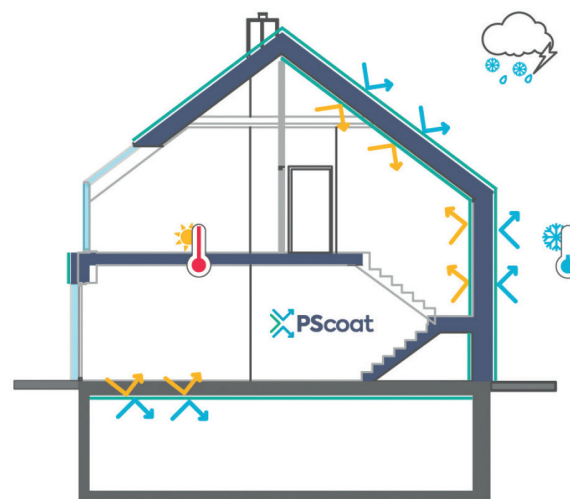
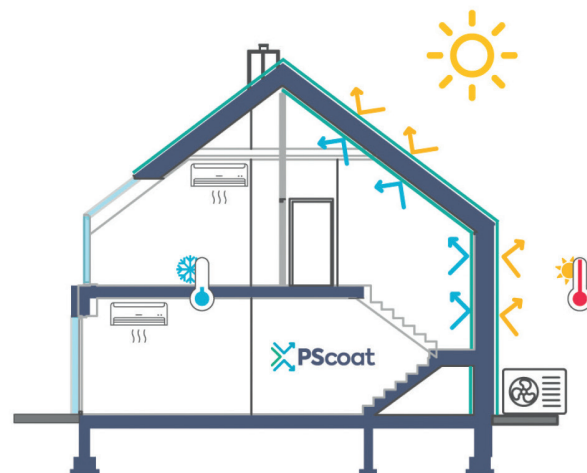
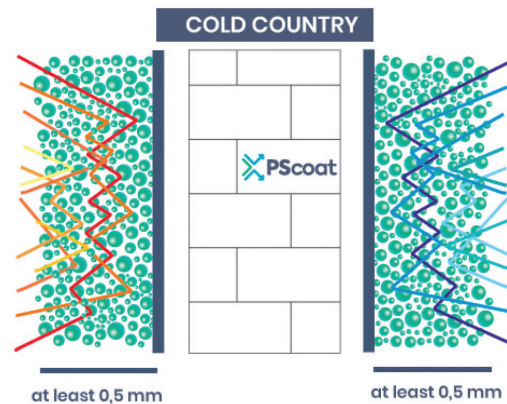
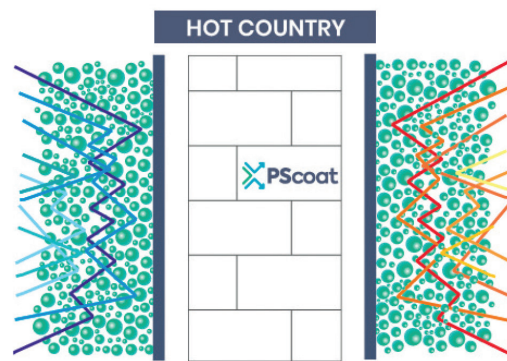
Microspheres are quartz microspheres with vacuum spaces inside that reflect light of any wavelength like a mirror. PScoat products create a reflective layer on the surface that can effectively replace traditional thermal insulation solutions.

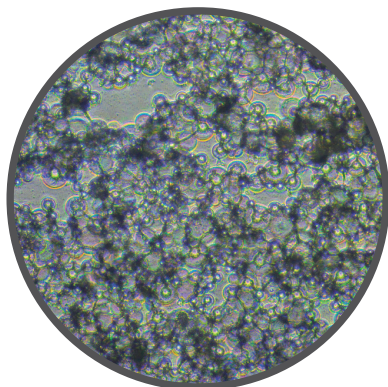
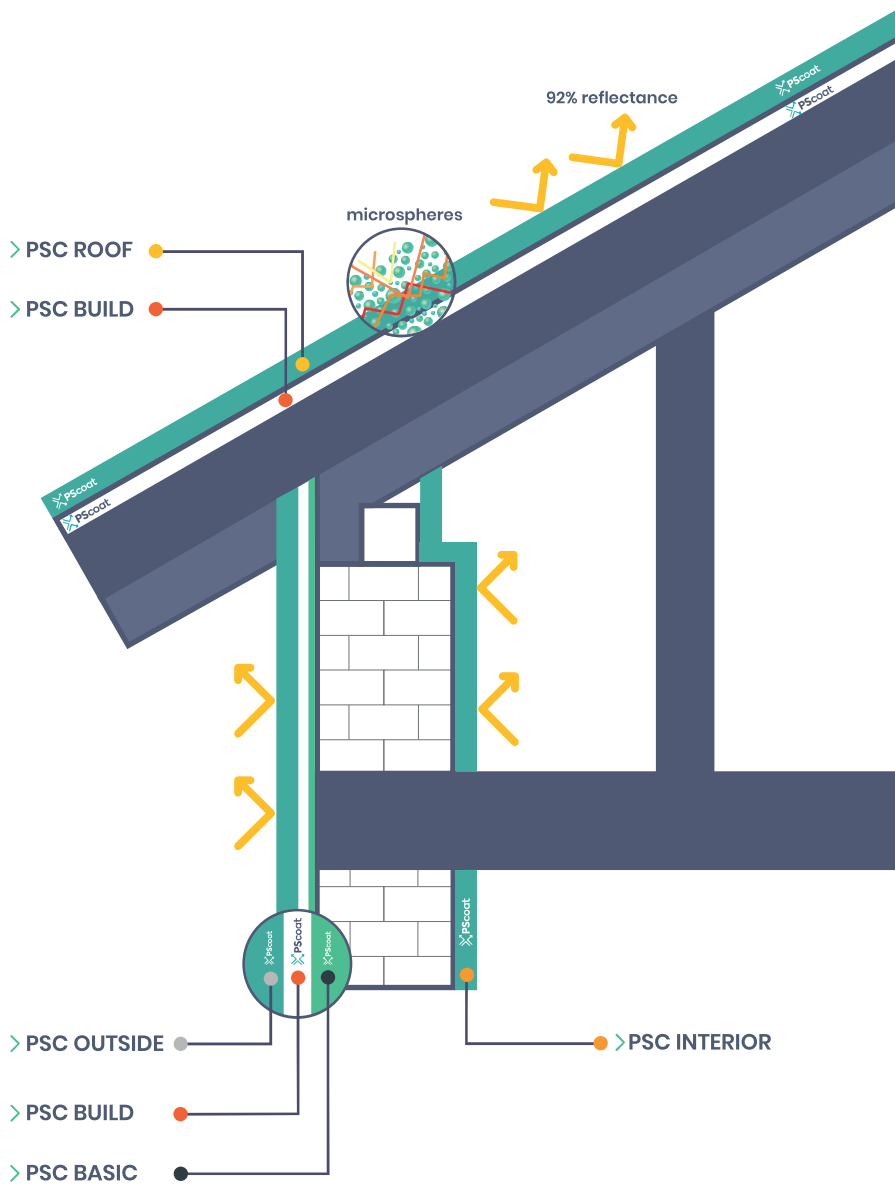
Surfaces / colour

PScoat can be applied to all types of building substrates such as mineral plasters, acrylic plasters, polystyrene foam or directly to brick.

It preserves the original appearance of the building - it allows the walls of e.g., historic buildings with reliefs or decorative balconies to be insulated without any visible changes.

The standard colour of PScoat is white, but it can be coloured on-site according to RAL palette. Darker shades are not recommended.





Benefits



Easy application



Excellent protection



Painting on hot surface



Resistance to UV rays



Resistance to chemicals

Protection



Protection against heat loss



Protection against corrosion



Moisture protection



Protection against mould



High fire resistance

Ecology



Low carbon footprint



Care for the environment



Longer life for protected parts



Non-toxic product



Emergo saving

CONTENT

PSC 250T/BASIC A (A – ANTICORROSION)	7
PSC 250T/BASIC B (B – BUILD)	9
PSC 250T/ECI – INTERIOR	11
PSC 250T/BUILD	13
PSC 250T/ECO – OUTSIDE	15
PSC 250T/ ECF – FLOOR	17
PSC 250T/ECE – ELASTIC	19
PSC 250T/ECR – ROOF	21
PSC 250T/INSIDE – BACTERIOSTATIC	23
PSC 250T/FLOOR – BACTERIOSTATIC	25
PSC 250T/HP and HP+	27
PSC 250T/EC and EC+	29



PScoat
POWER SMART COAT

Petr Kouril

Master of the Czech Republic
in aerobatics recommends



TÜV® Verified product No: 000065408

6 For more informations: www.prestigethermsolutions.co.uk



PSC 250T/BASIC A (A – ANTICORROSION)

BASE PAINT INCREASES ADHESION TO THE SUBSTRATE AND PREVENTS CORROSION



GENERAL INFORMATION

PSC 250T/BASIC A is an anti-corrosive primer used as a base for the high-performance coatings PSC-250T-HP/HP+ and the paints PSC-250T-ECR, PSC-250T-ECE, PSC-250T-ECF and PSC 250T-EC/EC+. It is non-toxic, environmentally friendly and forms a single membrane.

APPLICATION IS SUITABLE FOR SURFACES

Metals, all types of steel, aluminium, non-ferrous metals, plastics, metal roofs and tanks, pipes, valves, various industrial equipment.

DO NOT USE: PE, HDPE, PP, PTFE, and other plastics

APPLICATION

PSC-250T/BASIC A is used as a primer for application of PSC-250T-HP/HP+ base coat and PSC-250T-ECR, PSC-250T-ECE, PSC-250T-EC/EC+ and PSC 250T-ECF paints on metals, all kinds of steel, aluminium, non-ferrous metals, plastics, metal roofs and tanks, pipes, valves, various industrial equipment

INSULATION

PSC 250T/BASIC A is designed to improve the insulation properties and adhesion to the substrate for the basic layer PSC-250T-HP/HP+ base coat and PSC-250T-ECR, PSC-250T-ECE, PSC-250T-EC/EC+ and PSC 250T-ECF.

SURFACE PREPARATION

PSC-250T-BASIC A All surfaces must be clean (dust, dirt, oil and grease). A wire brush or sandpaper is recommended for metal surfaces. Metal surfaces should be cleaned of rust and a reactive resin based primer is recommended for these surfaces. Smooth (plastic) surfaces should be mechanically roughened.

COLOURS

Transparent when dry

CONTENT OF VOLATILE ORGANIC SUBSTANCES (VOC)

Less than 10 g / l

PSC CONSUMPTION per 1 m²

One coat on all suitable surfaces with perfect levelled surface:

-about 0.1-0.2 litre per m² depending on the absorbency of the substrate.

CURING TIME

Time before application of PSC 250T/BASIC A: min. 1,5 hours depending on temperature and relative humidity (see manufacturer's instructions - drying table). Do not apply the product if it rains or if rain starts before it dries.

WARNING: In any case, application of the next layer must not be carried out on a damp surface!

MIXING

PSC 250T/BASIC A is diluted with water before use. Dilute only the amount of product used. The water used for dilution should not exceed 0.3 l per 5 litre container. The mixture is diluted with a mixer at low speed (up to 150 rpm) for approximately 0.5 minutes in mechanical mixers.

APPLICATION EQUIPMENT

RECOMMENDED EQUIPMENT: roller or spray. Brush can be used on very small areas. When applying the product with a brush, apply three cross coats to ensure adequate protection.



For more informations: www.prestigethermsolutions.co.uk 7



APPLICATION PROCEDURES

We recommend the use of GRACO MARK V - VII (for more information refer to the manufacturer's manual + application guide).

PACKAGING

Plastic canister 5 litre

TRANSPORT WEIGHT

Net weight per litre: 1,0± 0,05 kg

STORAGE

Store

- in original and tightly closed containers at temperature from +5°C to +25°C
 - in closed spaces, away from sources of heat
- The product is waterborne and deteriorates in negative temperatures.

SHELF LIFE IN PACKAGING

12 months from date of packaging (protect from freezing and direct sunlight)

VENTILATION TEMPERATURE

Non-flammable (soluble in water)

WARRANTY / Protection time

12 months / 25 years



PSC 250T/BASIC B (B - BUILD)

BASE PAINT INCREASES ADHESION TO THE SUBSTRATE AND PREVENTS MOULD FORMATION



GENERAL SPECIFICATIONS

PSC 250T/BASIC B is an anti-mold primer that serves as a substrate for the high-performance, energy-efficient and flexible insulation and sealing coatings PSC-250T-Build, PSC-250T/ECI, PSC-250T/ECF and PSC-250T/ECO. It is non-toxic, environmentally friendly and forms a single membrane.

APPLICATION IS SUITABLE FOR SURFACES

Gypsum board, plasterboard, gypsum, cement and cement-lime plaster, concrete substrates, aerated concrete, ceramics.
DO NOT USE: PE, HDPE, PP, PTFE, and other plastics.

APPLICATION

PSC-250T/BASIC B is used as a primer for application of PSC-250T-Build, PSC-250T/ECI, PSC-250T/ECF and PSC-250T/ECO paints on all absorptive and porous surfaces such as: gypsum boards, gypsum-cardboard panels, gypsum, cement and cement-lime plasters, concrete substrates, aerated concrete, ceramics, etc. Increases adhesion of paints to substrates and consolidates substrates of uneven structure.

INSULATION

PSC 250T/BASIC B is designed to improve insulation properties and adhesion to substrates

for PSC-250T-Build, PSC-250T/ECI, PSC-250T/ECF and PSC-250T/ECO paints.

SURFACE PREPARATION

PSC-250T-BASIC B can be applied to dry substrates that have been cleaned of dust, wax, grease, oil, grease, and impermeable coatings. In case of mouldy surfaces, a suitable biocide preparation should be used.

COLOURS

Transparent when dry
CONTENT OF VOLATILE ORGANIC SUBSTANCES (VOC)
Less than 10 g / l
PSC CONSUMPTION per 1 m²
One coat on all suitable surfaces with perfectly even surface

- Approximately 0,1-0,2 litre per m² depending on surface absorptivity.

CURING TIME

Time before application of PSC 250T/ BASIC B: min. 1,5 hours depending on temperature and relative humidity. Do not apply the product if it rains or if rain starts before it dries.
WARNING: In any case, application of the next layer must not be carried out on a damp surface!

MIXING

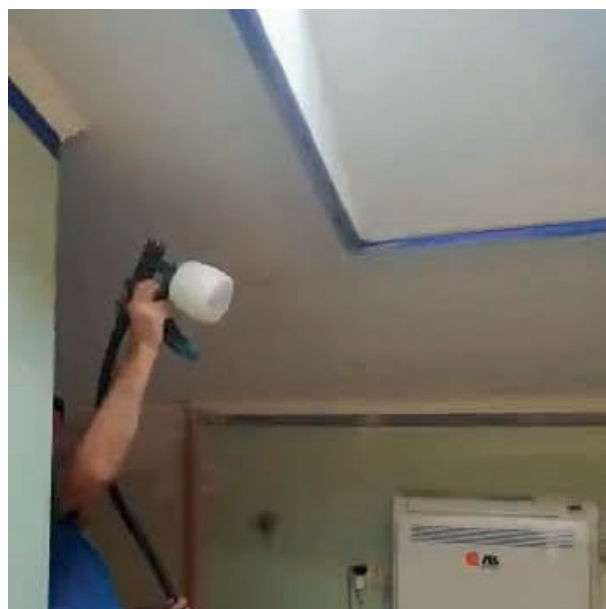
PSC 250T/BASIC B is diluted with water before use. Dilute only the amount of product used. Water used for dilution should not exceed 0,3 l per 5 litres container. The mixture is diluted with a mixer at low speed (up to 150 rpm) for approximately 0.5 minutes in mechanical mixers.

APPLICATION EQUIPMENT

Recommended equipment: roller or spray. Brush can be used on very small areas. When applying the product with a brush, apply three cross coats to ensure adequate protection.

APPLICATION PROCEDURES

We recommend using GRACO MARK V - VII (for more information refer to the manufacturer's manual + application instructions)



PACKAGING

Plastic can of 5 litre

SHIPPING WEIGHT

Net weight per litre: 1,0± 0,05 kg

STORAGE

Store

- in original and tightly closed containers at temperature from +5°C to +25°C
 - in closed spaces, away from sources of heat
- The product is waterborne and deteriorates in negative temperatures.

SHELF LIFE IN PACKAGING

12 months from date of packaging (protect from freezing and direct sunlight)

VENTILATION TEMPERATURE

Non-flammable (soluble in water)

WARRANTY / Protection time

12 months / 25 years



PSC 250T/ECI – INTERIOR

THERMO-REFLECTIVE AND ANTI-MOULDING INDOOR PAINT



GENERAL DESCRIPTION

PSC 250T/ECI – INTERIOR is a highly efficient thermal insulation and protection material for commercial and industrial buildings. It is completely washable and resistant to dirt and diluted chemicals. The acrylic resin-based paint uses the microspheres technology (Swiss formula).

POSSIBLE APPLICATIONS

The paint can be used on mineral-based surfaces: cement, lime-cement, gypsum and concrete plasters etc. It is both energy efficient and elastic. It is nontoxic, environmentally friendly and form a single membrane that overlaps the hairline cracks. The paint is fully washable and resistant to dirt and chemicals. It is suitable for use in climatic conditions where energy costs play an important role in maintaining a favourable temperature environment. The material is resistant to corrosion and water condensation.

SURFACE PREPARATION

All surfaces must be clean and free of efflorescence (dust, dirt, oil and grease).

In case of a facade renewal, it is advised to perform a detailed surface check and:

- remove old coating and all loose elements
- clean all dirty/oily spots

- in case of severe/permanent smudges apply sandblasting
- in case of fungal infection apply the appropriate agents
- level all roughness using cement or lime-cement based plasters
- before applying paint, apply the universal deep-penetration primer PSC 250T/BASIC B

CONTENT OF VOLATILE ORGANIC SUBSTANCES

Less than 10 g / l

CONSUMPTION OF PSC MATERIAL ON 1 m²

(one layer on all applicable surfaces with ideally level surface)

At a thickness of 0,15 mm: 0,18 litre per 1 m²

At a thickness of 0,20 mm: 0,24 litre per 1 m²

At a thickness of 0,25 mm: 0,30 litre per 1 m²

TIME OF EXCLUSION

Time before applying PSC 250T/ECI – INTERIOR:

min. 1,5 hours according to temperature and relative humidity (see Manufacturer's instruction + Application manual - drying chart). After this time, no dust is poured onto the paint and the coating does not flow at increased humidity. Do not apply the product in case of rain or if the rain may start before the paint dries sufficiently.

The ambient temperature and the temperature of the surface should be between +5°C and +30°C.

Air humidity should be lower than 80 %.

WARNING: In all cases, the paint cannot be applied on a wet surface.

MIXING

PSC 250T/ECI – INTERIOR is diluted with water before use. Dilute only the amount of product you use. The water used for dilution should not exceed 0.3l per pack of 18 litres. Mix the diluted mixture with a mixer at low speed (up to 150 rpm) for 3-5 minutes in mechanical mixers and 5-7 minutes with manual mixing. For detailed information please consult Manufacturer's instruction + Application manual).

APPLICATION EQUIPMENT

Recommended equipment: roller brushes or spraying machines. Brush can be used on very



small areas. When applying the product with a brush, it is necessary to apply three cross layers to ensure adequate protection.

PACKAGING

Plastic buckets of 10 or 18 litres.

TRANSPORT WEIGHT

Net weight per litre: $0.90 \pm 0,05$ kg

STORAGE

- in original and properly sealed containers, in temperature between $+5^{\circ}\text{C}$ and $+25^{\circ}\text{C}$
- in sealed rooms, away from heat sources.

The product is water-dilutable and will be destroyed in sub-zero temperatures.

SHELF LIFE OF PSC IN PACKAGING

12 months from date of packaging (protect from freezing and direct sunlight)

VENTILATION TEMPERATURE

Non-flammable (water-soluble)

PRODUCT CODE

PSC 250T/ECI - INTERIOR

Production batch: see package

WARRANTY / Lifetime

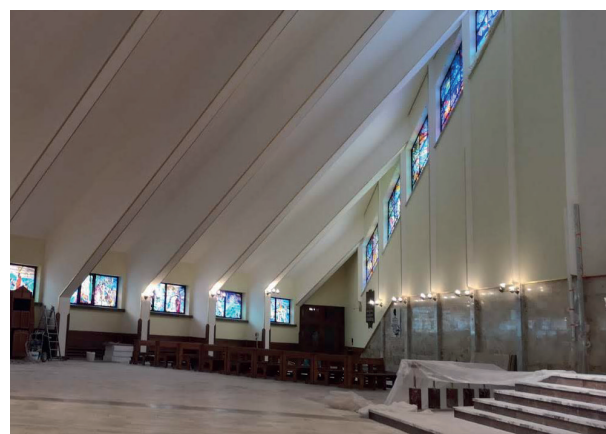
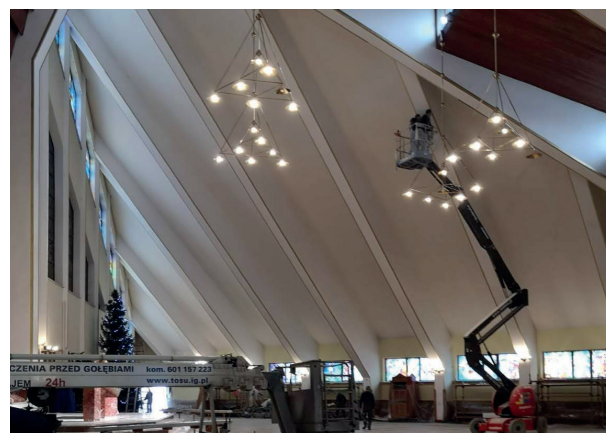
1 year / 25 years

EXCLUSIVE REPLACEMENT

Exclusive compensation for goods that does not correspond to the warranty provided is the replacement of the product. The manufacturer is not responsible for any damages, including (but not limited to) wage costs.

NOTE

For further information please see Manufacturer's instructions +Application manual



TECHNICAL DATA

Classification according to PN-EN 1062-1: 2005

Classification

Classification according to chemical properties

Acrylic based resin aqueous dispersion

Classification according to the state of dissolution

Water-dilutable

Gloss $85^{\circ} \leq 10$ (Matt)

G₃

Coating thickness $> 50 \leq 100$

E₂

Grain volume. (fine-grained). Marked according to PN-EN ISO 1524:2002 (EN 21524) equals: up to $100 \mu\text{m}$

S₁

Water vapour diffusion (Medium) $\leq 150 > 15 \text{ g/m}^2\text{-d}$

V₂

Water permeability (Small) $\leq 0,1 \text{ kg/m}^2\text{-h}^{0,5}$

W₃

Covering of cracks

Not tested

Carbon dioxide permeability

Not tested

PSC 250T/BUILD

THERMO-REFLECTIVE INSULATING AND ANTI-MOULDING MATERIAL



For insulation and protection of buildings.

GENERAL DESCRIPTION

PSC 250T BUILD is a highly effective, energy-efficient and elastic coating for insulation. The material is nontoxic, environmentally friendly and forms a single membrane that overlaps the hairline cracks. The coating is washable and resistant to chemicals and the chemical environment C4 and C5. These water-soluble coatings are made of acrylic resin filled with microspheres (Swiss patent).

TYPICAL USES

PSC BUILD is an efficient solution, perfect for the insulation of building partitions. The thermal insulation coating prevents vapour condensation on the covered surface. The coating is stable, nontoxic and has a low dusting factor when exposed to changes of atmospheric conditions. PSC 250T/BUILD can be applied to both interior and outside walls of residential and commercial buildings. In addition to its adhesion to all types of materials, the coating also works as vapour permeable and time-limited water-proof layer. Due to being environment and health friendly, the material can be used both outside and inside of buildings. PSC 250T/BUILD reflects up to (TSR) 92 ± 1% of the infrared radiation. The material can be

coloured directly by mixing or painted later, using emulsion paints.

SURFACE PREPARATION

PSC 250T/BUILD can be applied directly to corroded surfaces if they are in a solid condition. All surfaces must be cleared of dust, dirt, oil and loose particles. This will prevent the coating from detaching along with loose elements. The prepared surface must be dry (no water condensation) and any grease needs to be removed using a suitable formula. In case of smooth surfaces, it is recommended to matt them mechanically. After completing this procedure, the surface must be cleared of any dust, cleaned, and left to dry. In order to level gravelly surfaces and remove loose particles, it is recommended to use pressure cleaners.

CONTENT OF VOLATILE ORGANIC SUBSTANCES

less than 10 g / l

CONSUMPTION OF PSC MATERIAL ON 1 m²

(one layer on all applicable, horizontal surfaces)

At a thickness of 1.0 mm: 1.2 litre per 1 m²

At a thickness of 1.5 mm: 1.8 litre per 1 m²

At a thickness of 2.0 mm: 2.4 litre per 1 m²

TIME OF EXCLUSION

Time before applying the second layer: min. 4 hours depending on temperature and relative humidity (see manufacturer's instructions - drying chart). During this time the coating cannot be exposed to dust or increased humidity. Do not apply the product in case of rain or if the rain may start before the paint dries sufficiently.

MIXING

The PSC 250T/BUILD is diluted with water before use. Dilute only the amount of product you use. The water used for dilution should not exceed 0.3 l per pack. Mix the diluted mixture with a mixer at low speed (up to 150 rpm) for 3-5 minutes in mechanical mixers and 5-7 minutes with manual mixing. Detailed information can be found in the manufacturer's manual and the application manual.

APPLICATION EQUIPMENT

Recommended equipment: brushes or spraying machines. Brushes can be used on very small



areas. When applying the product with a brush, it is necessary to apply three cross layers to ensure adequate protection.

APPLICATION PROCEDURES

We recommend using the GRACO RTX 5500 for the application of structured surfaces and GRACO MARK V or GRACO MARK VII (see manufacturer's specifications) for smooth surface applications.

PACKAGING

Plastic buckets - 18 litre (5.3 gallons)
 ADDITIONAL TRANSPORT WEIGHT
 Net weight per litre. 0.52±0,05 kg
 Plastic bucket 18 litre (5.3 gallons): 9.36 kg
 Bucket size: 34 cm width x 32 cm height

STORAGE

- store at 5-25 °C, in original and sealed containers

- material to be stored indoors, away from heat sources
- material is water-dilutable and cannot be stored in sub-zero temperature

SHELF LIFE OF PSC IN PACKAGING

12 months from date of packaging (protect from freezing and direct sunlight)

VENTILATION TEMPERATURE

Non-flammable (water-soluble)

PRODUCT CODE

PSC 250T/BUILD
 Production batch: see package

WARRANTY / Lifetime

1 year / 25 years

TECHNICAL DATA – Classification according to PN-EN 15824:2010

Classification			
No.	Parameter	Method of examination	Declared value
1	Water vapor penetration: - Vapour penetration factor V [g/m ² d]	PN-EN ISO 7783:2011	6,2±0,15
2	Water absorption [m ² *h ^{0,5}]	PN-EN 1062-3:2008	0,01±0,2
3	Adhesion to surface [MPa]	PN-EN 1542-3:2000	≥1,0
4	Thermal durability [MPa] - after 20 cycles of freezing and refreezing	PN-EN 13687-3:2002	2,0±0,8
5	Adhesion [MPa] - to metal - to concrete	PN-EN 1542-3:2000	≥0,8 ≥1,0

PSC 250T/ECO – OUTSIDE

OUTDOOR COVERING THERMO-REFLECTIVE MATERIAL



Acrylic based, thermal reflective paint designed for building facades.

GENERAL DESCRIPTION

PSC 250T/ECO-OUTSIDE is a highly efficient thermal insulation and protection material for commercial and industrial buildings. It is completely washable and resistant to dirt and chemicals. The acrylic resin-based paint uses the microspheres technology (Swiss formula).

POSSIBLE APPLICATIONS

The paint can be used on mineral-based surfaces: cement, lime-cement, gypsum and concrete plasters etc. It is both energy efficient and elastic. It is nontoxic, environmentally friendly and form a single membrane that overlaps the hairline cracks. The paint is fully washable and resistant to dirt and diluted chemicals. It is suitable for use in climatic conditions where energy costs play an important role in maintaining a favourable temperature environment. The material is resistant to corrosion and water condensation.

SURFACE PREPARATION

All surfaces must be clean and free of efflorescence (dust, dirt, oil, and grease). In case of a facade renewal, it is advised to perform a detailed surface check and:

- remove old coating and all loose elements
- clean all dirty/oily spots
- in case of severe/permanent smudges apply sandblasting
- in case of fungal infection apply the appropriate agents
- level all roughness using cement or lime-cement based plasters
- before applying paint, apply the universal deep-penetration primer PSC 250T/BASIC B

CONTENT OF VOLATILE ORGANIC SUBSTANCES

Less than 10 g / l

CONSUMPTION OF PSC MATERIAL ON 1 m²

(one layer on all applicable surfaces with ideally level surface)

At a thickness of 0,15 mm: 0,18 litre per 1 m²

At a thickness of 0,20 mm: 0,24 litre per 1 m²

At a thickness of 0,25 mm: 0,30 litre per 1 m²

TIME OF EXCLUSION

Time before applying PSC 250T/ECO – OUTSIDE:

min. 1,5 hours according to temperature and relative humidity (see Manufacturer's instruction + Application manual - drying chart). Do not apply the product in case of rain or if the rain may start before the paint dries sufficiently.

The ambient temperature and the temperature of the surface should be between +5°C and +30°C Air humidity should be lower than 80 %

WARNING: In all cases, the paint cannot be applied on a wet surface.

MIXING

PSC 250T/ECO – OUTSIDE is diluted with water before use. Dilute only the amount of product you use. The water used for dilution should not exceed 0.3 l per pack. Mix the diluted mixture with a mixer at low speed (up to 150 rpm) for 3–5 minutes in mechanical mixers and 5–7 minutes with manual mixing. For detailed information please consult Manufacturer's instruction + Application manual).

APPLICATION EQUIPMENT

Recommended equipment: roller brushes or spraying machines. Brush can be used on very small areas. When applying the product with a



brush, it is necessary to apply three cross layers to ensure adequate protection.

PACKAGING

Plastic buckets of 10 or 18 litre.
 TRANSPORT WEIGHT
 Net weight per litre: 0.90±0,05 kg

STORAGE

- in original and properly sealed containers, in temperature between +5°C and + 25°C
- in sealed rooms, away from heat sources.
- The product is water-dilutable and will be destroyed in sub-zero temperatures.

SHELF LIFE OF PSC IN PACKAGING

12 months from date of packaging (protect from freezing and direct sunlight)

VENTILATION TEMPERATURE

Non-flammable (water-soluble)

PRODUCT CODE

PSC 250T/ECO - OUTSIDE
 Production batch: see package

WARRANTY / Lifetime

1 year / 25 years



TECHNICAL DATA

Classification according to PN-EN 1062-1: 2005

Classification	
Classification according to chemical properties	Acrylic based resin aqueous dispersion
Classification according to the state of dissolution	Water-dilutable
Gloss 85° ≤ 10 (Matt)	G₃
Coating thickness > 50 ≤ 100	E₂
Grain volume. (fine-grained). Marked according to PN-EN ISO 1524:2002 (EN 21524) equals: up to 100 µm	S₁
Water vapour diffusion (Medium) ≤ 150 > 15 g/m ² ·d	V₂
Water permeability (Small) ≤ 0,1 kg/m ² ·h ^{0,5}	W₃
Covering of cracks	Not tested
Carbon dioxide permeability	Not tested



PSC 250T/ECF – FLOOR

COVERING THERMO-REFLECTIVE MATERIAL FOR FLOORS



Acrylic based, thermal reflective paint designed for floors coating.

GENERAL DESCRIPTION

PSC 250T / ECF – FLOOR is a highly efficient, energy-saving, and flexible coating for insulating and sealing floors. It is nontoxic, environmentally friendly and form a single membrane that overlaps the hairline cracks.

The coating is washable and resistant to chemicals and the chemical environment C4 and C5. These water-soluble coatings are made of acrylic resin filled with microspheres (Swiss patent). Reduces condensation, resolves corrosion and surface heat transfer.

DO NOT USE ON: PE, HDPE, PP, PTFE, and other plastics.

APPLICATION PURPOSES

Efficient solution, perfect for the insulation of floors. The paint can be used on mineral-based surfaces: cement, lime-cement, gypsum and concrete plasters etc. The thermal insulation coating prevents vapour condensation on the covered surface. The coating is stable, non-toxic and has a low dusting factor when exposed to changes of atmospheric conditions. In addition to its adhesion to all types of materials, the coating also works as time-limited water-proof layer. Due

to being environment and health friendly, the material can be used both outside and inside of buildings. Reflects up to (TSR) $92 \pm 1\%$ of the infrared radiation. The material can be coloured directly by mixing or painted later, using emulsion paints. The material is resistant to corrosion, water condensation and works in C4/C5 chemical environment. It is both energy efficient and elastic. In addition to its adhesion to all types of materials, the coating also works as vapour permeable and time-limited water-proof layer.

SURFACE PREPARATION

All surfaces must be clean and free of efflorescence (dust, dirt, oil and grease). All rust must be removed from metal surfaces. This will prevent the coating from detaching along with loose elements. The prepared surface must be dry. Any grease needs to be removed using a suitable formula. Smooth surfaces must be mechanically roughened.

Following mechanical treatment, it is important to carefully clean the surfaces of all dust using a blower, brush or wash with water and wait until the surface is perfectly dry. To level gravelly surfaces, it is recommended to use pressure cleaners. In case of a facade renewal, it is advised to perform a detailed surface check and:

- remove old coating and all loose elements
- clean all dirty/oily spots
- in case of severe/permanent smudges apply sandblasting
- in case of fungal infection apply the appropriate agents
- level all roughness using cement or lime-cement based plasters
- before applying paint, apply the universal deep-penetration primer PSC 250T/BASIC B

CONTENT OF VOLATILE ORGANIC SUBSTANCES

Less than 10 g / l

CONSUMPTION OF PSC MATERIAL ON 1 m²

(one layer on all applicable surfaces with ideally level surface)

At a thickness of 0,15 mm: 0,18 litre per 1 m²

At a thickness of 0,20 mm: 0,24 litre per 1 m²

At a thickness of 0,25 mm: 0,30 litre per 1 m²



For more informations: www.prestigethermsolutions.co.uk 17



TIME OF EXCLUSION

Time before applying the second layer: min. 1.5 hours depending on temperature and relative humidity (see manufacturer's instructions - drying chart). During this time the coating cannot be exposed to dust or increased humidity. Do not apply the product in case of rain or if the rain may start before the paint dries sufficiently. The ambient temperature and the temperature of the surface should be between +5°C and +30°C. Air humidity should be lower than 80 %.

WARNING: In any case the application of the next layer mustn't be applied to a damp surface.

MIXING

Is diluted with water before use. Dilute only the amount of product you use. The water used for dilution should not exceed 0.2l per 10 litre. Mix the diluted mixture with a mixer at low speed (up to 150 rpm) for 3-5 minutes in mechanical mixers and 5-7 minutes with manual mixing. Detailed information can be found in the manufacturer's manual and the application manual.

APPLICATION EQUIPMENT

Recommended equipment: brushes or spraying machines. Brush can be used on very small areas. When applying the product with a brush, it is necessary to apply three cross layers to ensure adequate protection.

APPLICATION PROCEDURES

We recommend using the GRACO MARK V or GRACO MARK VII (see manufacturer's specifications) for smooth surface applications.

PACKAGING

Plastic buckets of 18 (4,76 US gal) or 10 litre (2,64 US gal).

ADDITIONAL TRANSPORT WEIGHT

Net weight per litre: 0,90 ± 0,05 kg
Plastic bucket 18 litre (5.3 gallons): 9.36 kg

STORAGE

store at 5-25 °C, in original and sealed containers material to be stored indoors, away from heat sources material is water-dilutable and cannot be stored in sub-zero temperature

SHELF LIFE OF PSC IN PACKAGING

12 months from date of packaging (protect from freezing and direct sunlight)

VENTILATION TEMPERATURE

Non-flammable (water-soluble)

WARRANTY / Lifetime

1 year / 25 years

TECHNICAL DATA

Classification according to PN-EN 1062-1: 2005

Classification

Classification according to chemical properties

Acrylic based resin aqueous dispersion

Classification according to the state of dissolution

Water-dilutable

Gloss 85° ≤ 10 (Matt)

G₃

Coating thickness > 50 ≤ 100

E₂

Grain volume. (fine-grained). Marked according to PN-EN ISO 1524:2002 (EN 21524) equals: up to 100 µm

S₁

Water vapour diffusion (Medium) ≤ 150 > 15 g/m²-d

V₂

Water permeability (Small) ≤ 0,1 kg/m²-h^{0,5}

W₃

Covering of cracks

Not tested

Carbon dioxide permeability

Not tested

PSC 250T/ECE – ELASTIC

SPECIAL THERMO-REFLECTIVE ELASTIC MATERIAL WITH HIGHER ADHESION



Acrylic paint intended for painting plastic and metal surfaces with thermo reflective properties and increased adhesion to the substrate.

GENERAL DESCRIPTION

PSC 250T / ECE – ELASTIC is a highly efficient, energy-saving and flexible paint for insulation and sealing of plastic and metal surfaces with thermo reflective properties and increased adhesion to the substrate. It is non-toxic, environmentally friendly and creates a single membrane that covers the microcracks. It is fully washable and resistant to dirt and diluted chemicals. Water-borne coating based on acrylic resin filled with microspheres (Swiss patent).

POSSIBLE APPLICATIONS

Paint PSC 250T / ECE – ELASTIC is intended for coloured painting of rigid and flexible plastic surfaces (PVC, PS, PC, etc.). It can also be used for coloured coating of new and for painting old metal roof surfaces. It is also suitable for roofs with a slope of over 3%. With this paint you can also paint ventilation and downpipes, as well as gutters made of hard PVC and galvanized sheet. For new galvanized surfaces, wash the surface with solvent or use sandblasting. It is suitable for use in climatic conditions where energy costs play an important role in maintaining a favourable temperature

environment. The paint has excellent resistance to corrosion, condensation, and the chemical environment C4 and C5. PSC 250T / ECE – ELASTIC reflects up to (TSR) $92 \pm 1\%$ of the infrared radiation. The material can be coloured directly by mixing or painted later, using emulsion paints.

SURFACE PREPARATION

All surfaces must be clean and free of efflorescence, dust, dirt, oil and grease. For cleaning metal surfaces, it is advised to use a wire brush or sandpaper. All rust must be removed from metal surfaces. Smooth surfaces must be mechanically roughened. In case of roofs, it is advised to apply washing by water under pressure or sandblasting.

- before applying paint, apply the universal deep-penetration primer PSC 250T/BASIC B or A

CONTENT OF VOLATILE ORGANIC SUBSTANCES

Less than 10 g / l

CONSUMPTION OF PSC MATERIAL ON 1 m²

(one layer on all applicable surfaces with ideally level surface)

At a thickness of 0,15 mm: 0,18 litre per 1 m²

At a thickness of 0,20 mm: 0,24 litre per 1 m²

At a thickness of 0,25 mm: 0,30 litre per 1 m²

TIME OF EXCLUSION

Time before applying PSC 250T/ECE – ELASTIC: min. 1,5 hours according to temperature and relative humidity (see Manufacturer's instruction + Application manual – drying chart). After this time, no dust is poured onto the paint and the coating does not flow at increased humidity. Do not apply the product in case of rain or if the rain may start before the paint dries sufficiently.

WARNING: In all cases, the paint cannot be applied on a wet surface

MIXING

PSC 250T/ECE – ELASTIC is diluted with water before use. Dilute only the amount of product you use. The water used for dilution should not exceed 0.2 l per 10 litres. Mix the diluted mixture with a mixer at low speed (up to 150 rpm) for 3–5 minutes in mechanical mixers and 5–7 minutes with manual



mixing. For detailed information please consult Manufacturer's instruction + Application manual).

APPLICATION EQUIPMENT

Recommended equipment: roller brushes or spraying machines. Brush can be used on very small areas. When applying the product with a brush, it is necessary to apply three cross layers to ensure adequate protection.

PACKAGING

Plastic buckets of 10 or 18 litres.

TRANSPORT WEIGHT

Net weight per litre: 0.90 ± 0,05 kg
 Plastic bucket: 18 litres (5,3 gallon): 16,2 kg
 Bucket size: 34 cm width x 32 cm height

STORAGE

- in original and properly sealed containers, in temperature between +5°C and +25°C
- in sealed rooms, away from heat sources.
- The product is water-dilutable and will be destroyed in sub-zero temperatures.

SHELF LIFE OF PSC IN PACKAGING

12 months from date of packaging (protect from freezing and direct sunlight)

VENTILATION TEMPERATURE

Non-flammable (water-soluble)

WARRANTY / Lifetime

1 year / 25 years



TECHNICAL DATA

Classification according to PN-EN 1062-1: 2005

Classification	
Classification according to chemical properties	Acrylic based resin aqueous dispersion
Classification according to the state of dissolution	Water-dilutable
Gloss 85° ≤ 10 (Matt)	G₃
Coating thickness > 50 ≤ 100	E₂
Grain volume. (fine-grained). Marked according to PN-EN ISO 1524:2002 (EN 21524) equals: up to 100 µm	S₁
Water vapour diffusion (Medium) ≤ 150 > 15 g/m ² ·d	V₂
Water permeability (Small) ≤ 0,1 kg/m ² ·h ^{0,5}	W₃
Covering of cracks	Not tested
Carbon dioxide permeability	Not tested



PSC 250T/ECR – ROOF

OUTDOOR COVERING THERMO-REFLECTIVE MATERIAL FOR ROOFS



Acrylic based, thermal reflective paint designed for metal roofs.

GENERAL DESCRIPTION

PSC 250T/ECR – ROOF is a highly efficient thermal insulation and protection material for sealing and insulation of roofs and adjacent elements. It is nontoxic, environmentally friendly and form a single membrane that overlaps the hairline cracks. The paint is fully washable, resistant to dirt and diluted chemicals. The acrylic resin-based paint uses the microspheres technology (Swiss formula).

POSSIBLE APPLICATIONS

PSC 250T/ECR – ROOF is designed for coating new metal roofs and renovating older ones. It is also suitable for ceramic/concrete tiles on roofs with slope of over 3%. The material can be used for painting: ventilation and garbage disposal pipes, and those made of solid PVC/galvanized sheet. In case of new surfaces, clean it with solvent or sandblasting. It is suitable for use in climatic conditions where energy costs play an important role in maintaining a favourable temperature environment. The material is resistant to corrosion, water condensation and works in C4/C5 chemical environment.

SURFACE PREPARATION

All surfaces must be clean and free of dust, dirt, oil and grease. For cleaning metal surfaces, it is advised to use a wire brush or sandpaper. All rust must be removed from metal surfaces. Smooth surfaces must be mechanically roughened. In case of roofs, it is advised to apply washing by water under pressure or sandblasting.

- before applying paint, apply the universal deep-penetration primer PSC 250T/BASIC B or A

CONTENT OF VOLATILE ORGANIC SUBSTANCES

less than 10 g / l

CONSUMPTION OF PSC MATERIAL ON 1 m²

(one layer on all applicable, horizontal surfaces)

At a thickness of 0,15 mm: 0,18 litre per 1 m²

At a thickness of 0,20 mm: 0,24 litre per 1 m²

At a thickness of 0,25 mm: 0,30 litre per 1 m²

TIME OF EXCLUSION

Time before applying PSC 250T ROOF min. 1,5 hours according to temperature and relative humidity (see Manufacturer's instruction + Application manual - drying chart). After this time, no dust is poured onto the paint and the coating does not flow at increased humidity. Do not apply the product in case of rain or if the rain may start before the paint dries sufficiently.

WARNING: In all cases, the paint cannot be applied on a wet surface.

MIXING

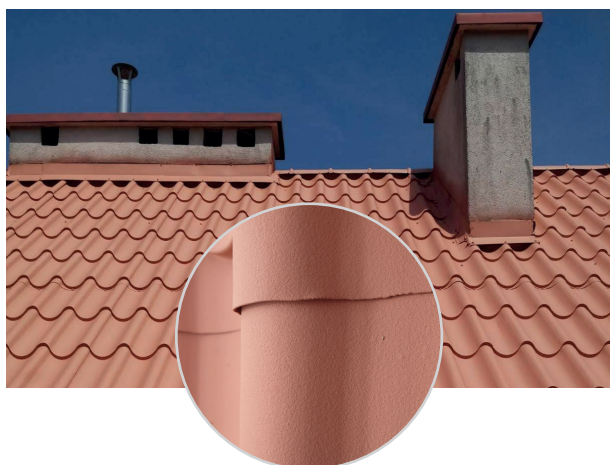
PSC 250T/ECR – ROOF is diluted with water before use. Dilute only the amount of product you use. The water used for dilution should not exceed 0.2 l per 10 litres. Mix the diluted mixture with a mixer at low speed (up to 150 rpm) for 3–5 minutes in mechanical mixers and 5–7 minutes with manual mixing. For detailed information please consult Manufacturer's instruction + Application manual).

APPLICATION EQUIPMENT

Recommended equipment: roller or spraying machine. Brush can be used on very small areas.



For more informations: www.prestigethermsolutions.co.uk 21



When applying the product with a brush, it is necessary to apply three cross layers to ensure adequate protection.

PACKAGING

Plastic buckets of 10 or 18 litres.

TRANSPORT WEIGHT

Net weight per liter: $0,90 \pm 0,05$ kg
 Plastic bucket: 18 litres (5,3 gallon): 16,2 kg
 Bucket size: 34 cm width x 32 cm height

STORAGE

- in original and properly sealed containers, in temperature between $+5^{\circ}\text{C}$ and $+25^{\circ}\text{C}$
- in sealed rooms, away from heat sources.
- The product is water-dilutable and will be destroyed in sub-zero temperatures.

SHELF LIFE OF PSC IN PACKAGING

12 months from the date of packaging (protect from freezing and direct sunlight)

VENTILATION TEMPERATURE

Non-flammable (water-soluble)

WARRANTY / Lifetime

1 year / 25 years

TECHNICAL DATA

Classification according to PN-EN 1062-1: 2005

Classification

Classification according to chemical properties

Acrylic based resin aqueous dispersion

Classification according to the state of dissolution

Water-dilutable

Gloss $85^{\circ} \leq 10$ (Matt)

G₃

Coating thickness $> 50 \leq 100$

E₂

Grain volume. (fine-grained). Marked according to PN-EN ISO 1524:2002 (EN 21524) equals: up to $100 \mu\text{m}$

S₁

Water vapour diffusion (Medium) $\leq 150 > 15 \text{ g/m}^2\text{-d}$

V₂

Water permeability (Small) $\leq 0,1 \text{ kg/m}^2\text{-h}^{0,5}$

W₃

Covering of cracks

Not tested

Carbon dioxide permeability

Not tested



PSC 250T/INSIDE – BACTERIOSTATIC

SPECIAL ANTIBACTERIAL THERMO-REFLECTIVE MATERIAL FOR INDOOR USE



Heat-reflective acrylic-based coating designed for interior walls of buildings such as kindergartens, schools, government offices, buildings with many people, medical offices, clinics, hospitals, retirement homes, etc.

GENERAL DESCRIPTION

PSC 250T/INSIDE – BACTERIOSTATIC is a highly effective insulating nanotechnology, bacteriostatic and decorative-protective coating that can be used on the interior surfaces of residential and industrial buildings. It is non-toxic, environmentally friendly and forms a single membrane that covers hairline cracks. The coating is washable and resistant to chemicals and bacteria including Covid 19. These water-soluble coatings are made of acrylic resin filled with microspheres and other nanoparticles (Swiss patent). DO NOT USE ON: PE, HDPE, PP, PTFE, and other plastics.

PURPOSES OF USE

Effective solution, ideal for isolating and neutralizing bacteria of building partitions. The paint can be used on mineral-based surfaces: cement, lime-cement, plaster, and concrete plasters, etc. The paint is stable, non-toxic and has a low dust factor when exposed to changes in atmospheric conditions. As the material is

environmentally and health friendly, it can be used in both exterior and interior applications. It reflects up to (TSR) $92 \pm 1\%$ of infrared radiation. The material can be coloured directly by mixing or later with emulsion paints. It is suitable for use in climates where energy costs play an important role in maintaining a favourable ambient temperature. It is both energy efficient and flexible. It can be used on interior and exterior walls of residential and commercial buildings. In addition to adhering to all types of materials, it also acts as a vapor permeable and time limited waterproof coating. It provides high adhesion to all known materials, including concrete and plastic.

SURFACE PREPARATION

All surfaces must be clean and free of efflorescence (dust, dirt, oil and grease). All rust must be removed from metal surfaces. This will prevent the paint from separating along with loose elements. All grease must be removed using a suitable product. Smooth surfaces must be mechanically roughened. After mechanical treatment, it is important to thoroughly clean the surfaces of all dust using a blower, brush or water wash and wait until the surface is completely dry. Pressure cleaners are recommended to level gritty surfaces. In the case of façade restoration, it is recommended to carry out a detailed inspection of the surface and: remove old paint and any loose elements clean any dirty/oily areas in the case of heavy/permanent stains use sandblasting in the case of mould infestation use suitable agents level any unevenness using cement or lime-based plasters before applying paint use PSC-250T BASIC B Universal Deep Penetrating Coat.

CONTENT OF VOLATILE ORGANIC SUBSTANCES

Less than 10 g / l

CONSUMPTION OF PSC MATERIAL ON 1 m²

(one layer on all applicable surfaces with ideally level surface)

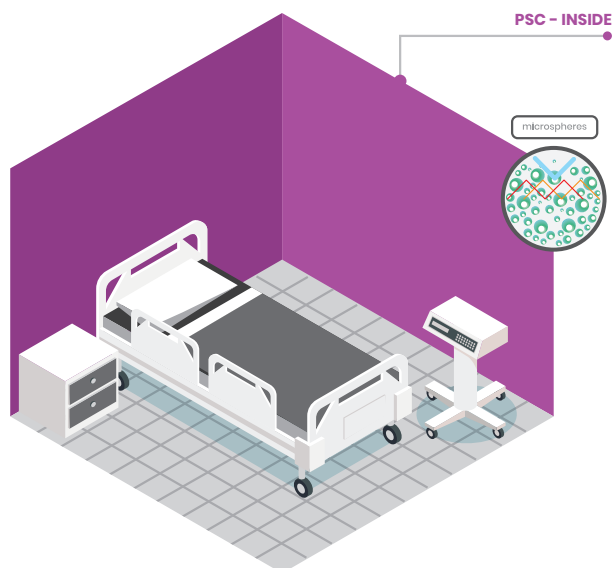
At a thickness of 0,15 mm: 0,18 litre per 1 m²

At a thickness of 0,20 mm: 0,24 litre per 1 m²

At a thickness of 0,25 mm: 0,30 litre per 1 m²



For more informations: www.prestigethermsolutions.co.uk 23

**TIME OF EXCLUSION: Time before applying**

the second layer: min. 1.5 hours depending on temperature and relative humidity (see manufacturer's instructions - drying chart). During this time the coating cannot be exposed to dust or increased humidity. Do not apply the product in case of rain or if the rain may start before the paint dries sufficiently. "The ambient temperature and the temperature of the surface should be between +5°C and +30°C Air humidity should be lower than 80 %" **WARNING:** In any case the application of the next layer mustn't be applied to a damp surface.

MIXING

Is diluted with water before use. Dilute only the amount of product you use. The water used for dilution should not exceed 0.3 l per 18 litre pack. Mix the diluted mixture with a mixer at low speed (Up to 150 rpm) for 3-5 minutes in mechanical mixers and 5-7 minutes with manual mixing. Detailed information can be found in the manufacturer's manual and the application manual.

APPLICATION EQUIPMENT

Recommended equipment: brushes or spraying machines. Brush can be used on very small areas. When applying the product with a brush, it is necessary to apply three cross layers to ensure adequate protection.

APPLICATION PROCEDURES

We recommend using the GRACO MARK V or GRACO MARK VII (see manufacturer's specifications) for smooth surface applications.

**PACKAGING**

Plastic buckets of 18 (4,76 US gal) or 10 litres (2,64 US gal).

ADDITIONAL TRANSPORT WEIGHT

Net weight per litre.: 0,90 ± 0,05 kg Plastic bucket 18 litre (5.3 gallons): 9.36 kg

STORAGE

store at 5-25 °C, in original and sealed containers material to be stored indoors, away from heat sources material is water-dilutable and cannot be stored in sub-zero temperature

SHELF LIFE OF PSC IN PACKAGING

12 months from date of packaging (protect from freezing and direct sunlight)

VENTILATION TEMPERATURE

Non-flammable (water-soluble)

WARRANTY / Lifetime

1 year / 25 years

EXCLUSIVE REPLACEMENT

Exclusive compensation for goods that does not correspond to the warranty provided is the replacement of the product. The manufacturer is not responsible for any damages, including (but not limited to) wage costs.

NOTE

For further information please see Manufacturer's instructions +Application manual

PSC 250T/FLOOR - BACTERIOSTATIC

SPECIAL ANTIBACTERIAL THERMO-REFLECTIVE MATERIAL FOR FLOORS



Heat-reflective acrylic-based coating designed for interior floors of buildings such as kindergartens, schools, government offices, buildings with many people, medical offices, clinics, hospitals, retirement homes, etc.

GENERAL DESCRIPTION

PSC 250T / FLOOR – BACTERIOSTATIC is a highly efficient nanotechnology, energy-saving, and flexible bacteriostatic coating for insulating and sealing floors. It is nontoxic, environmentally friendly and form a single membrane that overlaps the hairline cracks. The coating is washable and resistant to chemicals and bacteria including Covid 19. These water-soluble coatings are made of acrylic resin filled with microspheres (Swiss patent). Reduces condensation, and surface heat transfer.

DO NOT USE ON: PE, HDPE, PP, PTFE, and other plastics.

APPLICATION PURPOSES

Effective solutions, ideal for insulating floors and neutralising bacteria, including Covid 19. The paint can be used on mineral-based surfaces: cement, lime-cement, gypsum, and concrete plasters etc. The thermal insulation coating prevents vapour condensation on the covered surface. The coating is stable, non-toxic and has

a low dusting factor when exposed to changes of atmospheric conditions. In addition to its adhesion to all types of materials, the coating also works as time-limited water-proof layer. Due to being environment and health friendly, the material can be used both outside and inside of buildings. Reflects up to (TSR) $92 \pm 1\%$ of the infrared radiation. The material can be coloured directly by mixing or painted later, using emulsion paints. The material is resistant to water condensation and works in C4/C5 chemical environment. It is both energy efficient and elastic. In addition to its adhesion to all types of materials, the coating also works as vapour permeable and time-limited water-proof layer.

SURFACE PREPARATION

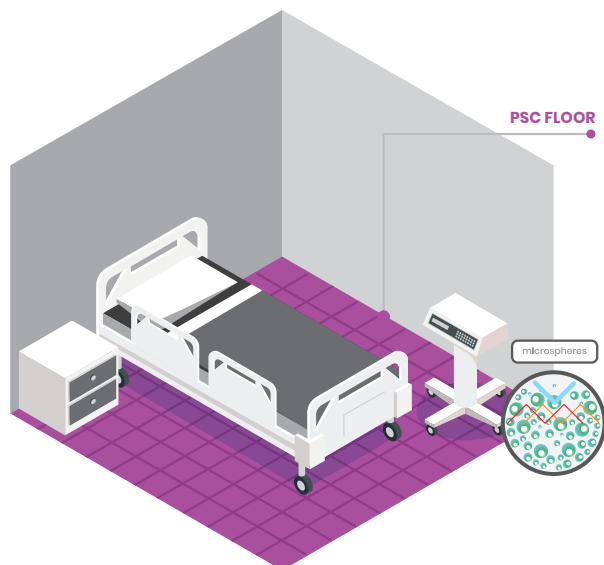
All surfaces must be clean and free of efflorescence (dust, dirt, oil, and grease). All rust must be removed from metal surfaces. This will prevent the coating from detaching along with loose elements. The prepared surface must be dry. Any grease needs to be removed using a suitable formula. Smooth surfaces must be mechanically roughened.

Following mechanical treatment, it is important to carefully clean the surfaces of all dust using a blower, brush or wash with water and wait until the surface is perfectly dry. To level gravelly surfaces, it is recommended to use pressure cleaners. In case of a facade renewal, it is advised to perform a detailed surface check and:

- remove old coating and all loose elements
- clean all dirty/oily spots
- in case of severe/permanent smudges apply sandblasting
- in case of fungal infection apply the appropriate agents
- level all roughness using cement or lime-cement based plasters
- before applying paint, apply the universal deep-penetration primer PSC-250T/BASIC B

CONTENT OF VOLATILE ORGANIC SUBSTANCES

Less than 10 g / l



CONSUMPTION OF PSC MATERIAL ON 1 m²

(one layer on all applicable surfaces with ideally level surface)

At a thickness of 0,15 mm: 0,18 litre per 1 m²

At a thickness of 0,20 mm: 0,24 litre per 1 m²

At a thickness of 0,25 mm: 0,30 litre per 1 m²

TIME OF EXCLUSION

Time before applying the second layer: min. 1.5 hours depending on temperature and relative humidity (see manufacturer's instructions - drying chart). During this time the coating cannot be exposed to dust or increased humidity. Do not apply the product in case of rain or if the rain may start before the paint dries sufficiently. The ambient temperature and the temperature of the surface should be between +5°C and +30°C. Air humidity should be lower than 80%.

WARNING: In any case the application of the next layer mustn't be applied to a damp surface.

MIXING

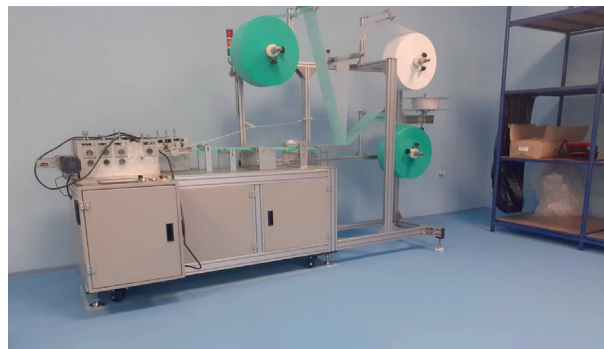
Is diluted with water before use. Dilute only the amount of product you use. The water used for dilution should not exceed 0.2 l per 10 litre. Mix the diluted mixture with a mixer at low speed (up to 150 rpm) for 3-5 minutes in mechanical mixers and 5-7 minutes with manual mixing. Detailed information can be found in the manufacturer's manual and the application manual.

APPLICATION EQUIPMENT

Recommended equipment: brushes or spraying machines.

Brush can be used on very small areas.

When applying the product with a brush, it is



necessary to apply three cross layers to ensure adequate protection.

APPLICATION PROCEDURES

We recommend using the GRACO MARK V or GRACO MARK VII (see manufacturer's specifications) for smooth surface applications.

PACKAGING

Plastic buckets of 18 (4,76 US gal) or 10 litre (2,64 US gal).

ADDITIONAL TRANSPORT WEIGHT

Net weight per litre: 0,90 ± 0,05 kg

Plastic bucket 18 litres (5.3 gallons): 9.36 kg

STORAGE

store at 5–25 °C, in original and sealed containers material to be stored indoors, away from heat sources material is water-dilutable and cannot be stored in sub-zero temperature

SHELF LIFE OF PSC IN PACKAGING

12 months from date of packaging (protect from freezing and direct sunlight)

VENTILATION TEMPERATURE

Non-flammable (water-soluble)

WARRANTY / Lifetime

1 year / 25 years

PSC 250T/HP and HP+

SPECIAL THERMO-REFLECTIVE AND INSULATING MATERIAL WITH ANTI-CORROSIVE EFFECTS



APPLYING PSC 250T HP and HP+ PROVIDES BENEFITS SUCH AS:

- reduction of energy and cooling / heating costs (up to 50%)
- savings on device operation - air conditioning / heating
- decrease / increase in ambient air temperature
- reducing pollution in urban areas
- easy recycling
- saving space thanks to the thin layer of insulation
- corrosion protection
- protection against condensation
- thermal insulation
- extending the life of the device
- mould protection

GENERAL DESCRIPTION

PSC 250T HP and HP+ (INDUSTRY) are highly effective, energy-efficient, and elastic coatings for insulation and waterproofing. They are nontoxic, environmentally friendly and form a single membrane that overlaps the hairline cracks. The material is washable and resistant to chemicals and the chemical environment C4 and C5. These water-soluble coatings are made of acrylic resin filled with microspheres (Swiss patent).

APPLICATION IS SUITABLE FOR THE FOLLOWING SURFACES:

Metals, all kinds of steel, aluminium, non-ferrous metals, metal roofs, metal tanks, pipes, valves, various industrial equipment. Reduces condensation, resolves corrosion and surface heat transfer.

DO NOT USE ON: PE, HDPE, PP, PTFE, and other plastics.

APPLICATION PURPOSES

PSC 250T HP and HP+ is a highly effective material that can be used for insulation of both cold and hot water pipelines and air-conditioning systems. The thermal insulation coating prevents vapour condensation on the covered surface. The coating is stable and has high adhesion to metals without corrosion. It is non-toxic and has a low dusting factor when exposed to changes of atmospheric conditions. PSC 250T HP and HP+ can be applied to both interior and outside walls of buildings, pipelines, boilers, vents, and industrial machinery. In addition to its adhesion to all types of materials, the coating also works as vapour permeable and time-limited water-proof layer. Due to being environment and health friendly, the material can be used both outside and inside of buildings. PSC 250T HP and HP+ reflects up to (TSR) $92 \pm 1\%$ of the infrared radiation. The material can be coloured directly by mixing or painted later on, using emulsion paints.

SURFACE PREPARATION

PSC 250T HP and HP+ can be applied directly to corroded surfaces if they are in a solid condition. All surfaces must be cleared of dust, dirt, oil and loose particles, like peeling-off rust. This will prevent the coating from detaching along with loose elements. In case of cleaning surfaces with extensive corrosion, it is advised to use either wire brushes or grinder blades. The prepared surface must be dry, and any grease needs to be removed using a suitable formula. In order to level gravelly surfaces, it is recommended to use pressure cleaners.

CONTENT OF VOLATILE ORGANIC SUBSTANCES

Less than 10 g / l



For more informations: www.prestigethermsolutions.co.uk 27

CONSUMPTION OF PSC MATERIAL ON 1 m²

(one layer on all applicable, horizontal surfaces)

At a thickness of 1.0 mm: 1.2 litre per 1 m²

At a thickness of 1.5 mm: 1.8 litre per 1 m²

At a thickness of 2.0 mm: 2.4 litre per 1 m²

TIME OF EXCLUSION

Time before applying the second layer: min. 1.5 hours depending on temperature and relative humidity (see manufacturer's instructions - drying chart). Do not apply the product in case of rain or if the rain may start before the paint dries sufficiently.

WARNING: In any case the application of the next layer mustn't be applied to a damp surface.

MIXING

The PSC 250T HP and HP+ is diluted with water before use. Dilute only the amount of product you use. The water used for dilution should not exceed 0.3l per pack. Mix the diluted mixture with a mixer at low speed (up to 150 rpm) for 3-5 minutes in mechanical mixers and 5-7 minutes with manual mixing. Detailed information can be found in the manufacturer's manual and the application manual.

APPLICATION EQUIPMENT

Recommended equipment: brushes or spraying machines. Brushes can be used on very small areas. When applying the product with a brush, it is necessary to apply three cross layers to ensure adequate protection.

APPLICATION PROCEDURES

We recommend using the GRACO RTX 5500 for the application of structured surfaces and GRACO MARK V or GRACO MARK VII (see manufacturer's specifications) for smooth surface applications.

PACKAGING

Plastic buckets - 18 litres (5.3 gallons)

ADDITIONAL TRANSPORT WEIGHT

Net weight per liter: 0.52±0,05 kg

Plastic bucket 18 litres (5.3 gallons): 9.36 kg

Bucket size: 34 cm width x 32 cm height

STORAGE

- store at 5-25 °C, in original and sealed containers
- material to be stored indoors, away from heat sources
- material is water-dilutable and cannot be stored in sub-zero temperature

SHELF LIFE OF PSC IN PACKAGING

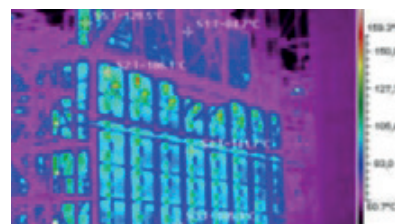
12 months from date of packaging (protect from freezing and direct sunlight)

VENTILATION TEMPERATURE

Non-flammable (water-soluble)

WARRANTY / Lifetime

1 year / 25 years

**TECHNICAL DATA** – Classification according to PN-EN 15824:2010

Classification			
No.	Parameter	Method of examination	Declared value
1	Water vapor penetration: - Vapour penetration factor V [g/m ² d]	PN-EN ISO 7783:2011	20±0,5
2	Water absorption [m ² *h ^{0,5}]	PN-EN 1062-3:2008	0,01±0,2
3	Adhesion to surface [MPa]	PN-EN 1542-3:2000	≥1,0
4	hermal durability [MPa] - after 20 cycles of freezing and refreezing	PN-EN 13687-3:2002	2,0±0,8
5	Adhesion [MPa] - to metal - to concrete	PN-EN 1542-3:2000	≥0,8 ≥1,0

PSC 250T/EC and EC+

SPECIALLY COATED THERMO-REFLECTIVE MATERIAL WITH ANTI-CORROSIVE EFFECTS



GENERAL DESCRIPTION

PSC 250T EC and EC+ is a highly efficient thermal insulation and protection material for sealing and insulation of industrial metal surfaces and adjacent elements. It is nontoxic, environmentally friendly and forms a single membrane that overlaps the hairline cracks. The paint is fully washable, resistant to dirt and diluted chemicals. The acrylic resin-based paint uses the microspheres technology (Swiss formula).

POSSIBLE APPLICATIONS

PSC 250T EC and EC+ is designed for new industrial metal surfaces and renovating older ones. The material can be used for painting: ventilation and garbage disposal pipes, and those made of galvanized sheet. In case of new surfaces, clean it with solvent or sandblasting. It is suitable for use in climatic conditions where energy costs play an important role in maintaining a favourable temperature environment. The material is resistant to corrosion, water condensation and works in C4/C5 chemical environment.

SURFACE PREPARATION

All surfaces must be clean and free of dust, dirt, oil, and grease. For cleaning metal surfaces, it is advised to use a wire brush or sandpaper. All rust must be removed from metal surfaces. Smooth

surfaces must be mechanically roughened. In case of industrial metal surfaces, it is advised to apply washing by water under pressure or sandblasting.

CONTENT OF VOLATILE ORGANIC SUBSTANCES

less than 10 g / l

CONSUMPTION OF PSC MATERIAL ON 1 m²

(one layer on all applicable, horizontal surfaces)

At a thickness of 0,15 mm: 0,18 litre per 1 m²

At a thickness of 0,20 mm: 0,24 litre per 1 m²

At a thickness of 0,25 mm: 0,30 litre per 1 m²

TIME OF EXCLUSION

Time before applying PSC 250T EC and EC+ min. 1,5 hours according to temperature and relative humidity (see Manufacturer's instruction + Application manual - drying chart). After this time, no dust is poured onto the paint and the coating does not flow at increased humidity. Do not apply the product in case of rain or if the rain may start before the paint dries sufficiently.

WARNING: In all cases, the paint cannot be applied on a wet surface.

MIXING

PSC 250T EC and EC+ is diluted with water before use. Dilute only the amount of product you use. The water used for dilution should not exceed 0.2 l per 10 litres. Mix the diluted mixture with a mixer at low speed (up to 150 rpm) for 3-5 minutes in mechanical mixers and 5-7 minutes with manual mixing. For detailed information please consult Manufacturer's instruction + Application manual).

APPLICATION EQUIPMENT

Recommended equipment: roller or spraying machine. Brush can be used on very small areas. When applying the product with a brush, it is necessary to apply three cross layers to ensure adequate protection.

PACKAGING

Plastic buckets of 10 or 18 litres.

TRANSPORT WEIGHT

Net weight per litre: 0,90 ± 0,05 kg



For more informations: www.prestigethermsolutions.co.uk 29



Plastic bucket: 18 litres (5,3 gallon): 16,2 kg
 Bucket size: 34 cm width x 32 cm height

STORAGE

- in original and properly sealed containers, in temperature between +5°C and + 25°C
- in sealed rooms, away from heat sources.
- The product is water-dilutable and will be destroyed in sub-zero temperatures.

SHELF LIFE OF PSC IN PACKAGING

12 months from the date of packaging (protect from freezing and direct sunlight)

VENTILATION TEMPERATURE

Non-flammable (water-soluble)

WARRANTY / Lifetime

1 year / 25 years

EXCLUSIVE REPLACEMENT

Exclusive compensation for goods that does not correspond to the warranty provided is the replacement of the product. The manufacturer is not responsible for any damages, including (but not limited to) wage costs.

NOTE

For further information please see Manufacturer's instructions +Application manual

TECHNICAL DATA

Classification according to PN-EN 1062-1: 2005

Classification	
Classification according to chemical properties	Acrylic based resin aqueous dispersion
Classification according to the state of dissolution	Water-dilutable
Gloss 85° ≤ 10 (Matt)	G₃
Coating thickness > 50 ≤ 100	E₂
Grain volume. (fine-grained). Marked according to PN-EN ISO 1524:2002 (EN 21524) equals: up to 100 µm	S₁
Water vapour diffusion (Medium) ≤ 150 > 15 g/m ² ·d	V₂
Water permeability (Small) ≤ 0,1 kg/m ² ·h ^{0,5}	W₃
Covering of cracks	Not tested
Carbon dioxide permeability	Not tested



Attachment No. 1

Buyer's details:

Delivery address:

Type of substrate:

Surface: m²

PScot TYPES	Application	ORDER (quantity)	Colour RAL
PSC 250T/BASIC A	PSC 250T/BASIC A is an anti-corrosive primer used as a base for the high-performance coatings PSC-250T-HP/HP+ and the paints PSC-250T-ECR, PSC-250T-ECE, PSC-250T-ECF and PSC 250T-EC/EC+.		
PSC 250T/BASIC B	PSC 250T/BASIC B is an anti-mould primer that serves as a substrate for the high-performance, energy-efficient and flexible insulation and sealing coatings PSC-250T-Build, PSC-250T/ECI, PSC-250T/ECF and PSC-250T/ECO.		
PSC 250T/ECI - INTERIOR	An acrylic paint with thermo-reflective properties for painting the interior surfaces of buildings.		
PSC 250T/BUILD	Multicomponent material intended for thermal insulation and protection of building surfaces.		
PSC 250T/ECO - OUTSIDE	Acrylic paint with thermo-reflective properties intended for painting facades of buildings.		
PSC 250T/ECF - FLOOR	Is used for insulating and sealing floors.		
PSC 250T/ECE - ELASTIC	Is used for insulation and sealing of plastic and metal surfaces with thermo-reflective properties and increased adhesion to the substrate.		
PSC 250T/ECR - ROOF	A thermo-reflective acrylic paint for metal roofs.		
PSC 250T/INSIDE - BACTERIOSTATIC	Heat-reflective acrylic-based coating designed for interior walls of buildings such as kindergartens, schools, government offices, buildings with many people, medical offices, clinics, hospitals, retirement homes, etc.		
PSC 250T/FLOOR - BACTERIOSTATIC	Heat-reflective acrylic-based coating designed for interior floors of buildings such as kindergartens, schools, government offices, buildings with many people, medical offices, clinics, hospitals, retirement homes, etc.		
PSC 250T/HP	A multi-component material intended for thermal insulation and corrosion protection of metal surfaces.		
PSC 250T/HP+	A multi-component material intended for thermal insulation and corrosion protection of metal surfaces - possible application without substrate.		
PSC 250T/EC	Is suitable for painting new and old metal surfaces		
PSC 250T/EC+	Is suitable for painting new and old metal surfaces - possible application without substrate.		



mobile: +44 (0) 7700 870696
email: office@prestigets.co.uk
address: St. Helier, Jersey

www.prestigethermsolutions.co.uk